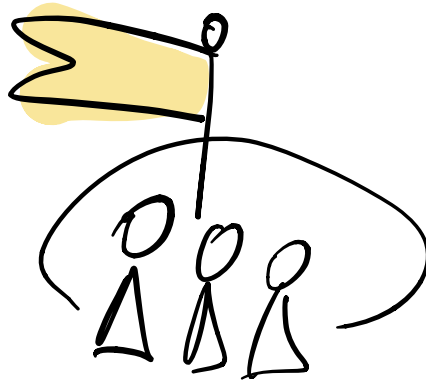
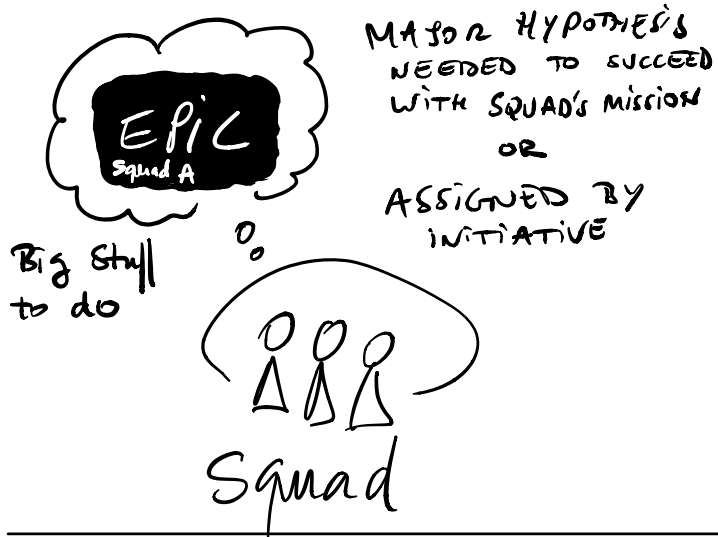


THE LEAD SQUAD  
PROTOCOL

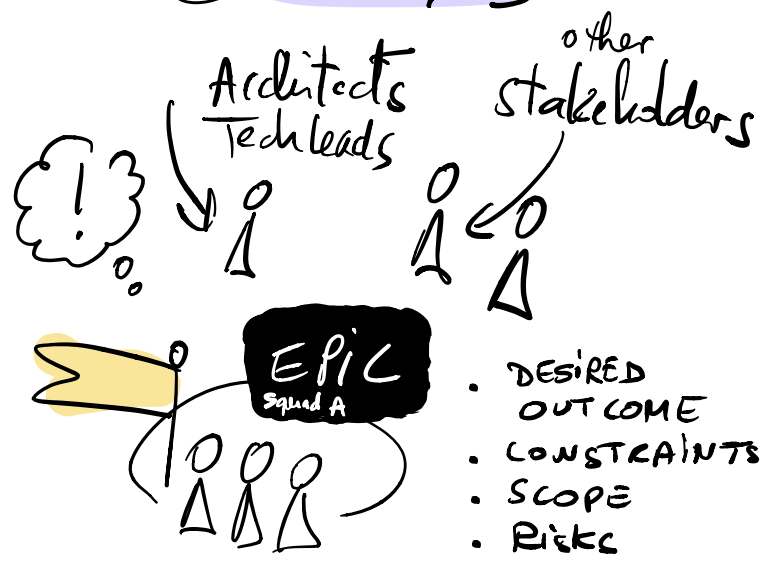
V1.1



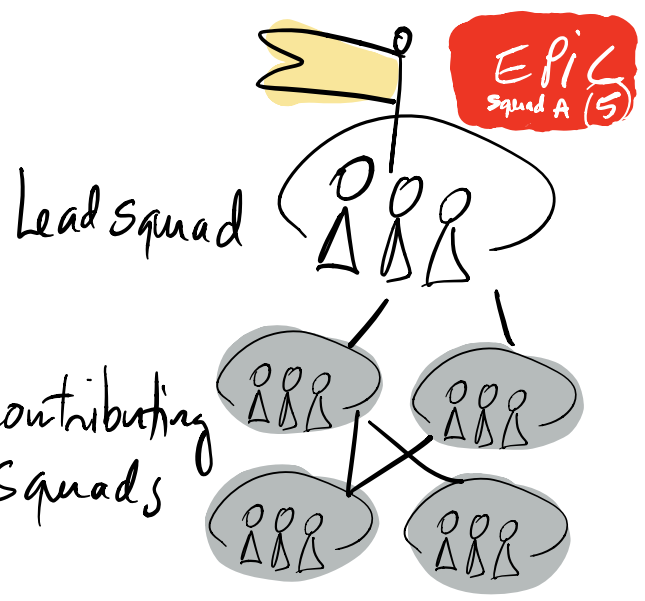
# ① BECOME LEAD SQUAD



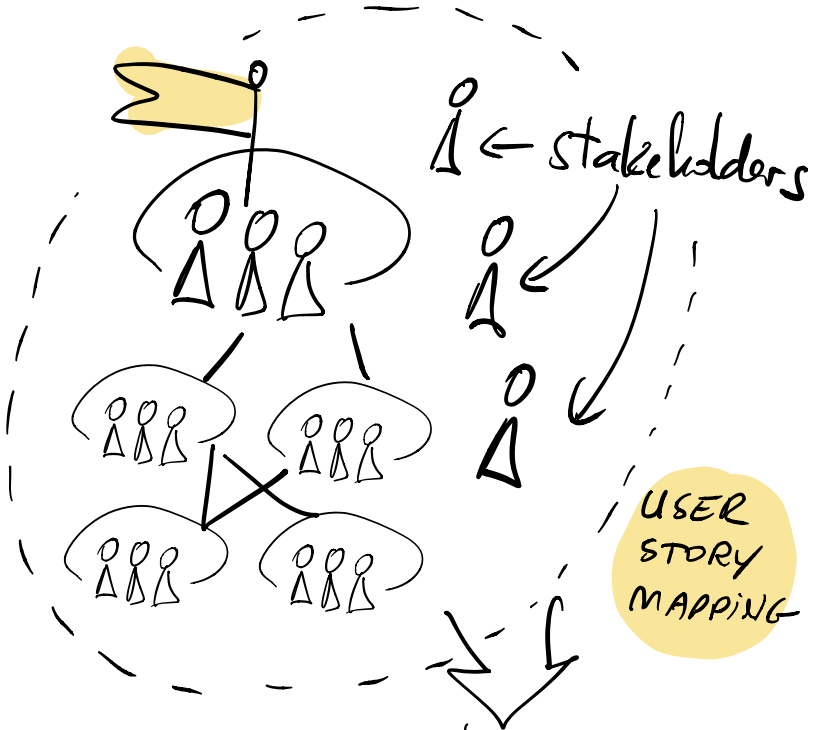
# ② ANALYSIS



# ③ ENGAGE CONTRIBUTING SQUADS



# ④ DESIGN & PLAN SOLUTION



	A	B	C	D	
	□ □ ①	□ □	□ □ ②	□ □	Sprint 1
	□ □ ①	□ □	□ □ ②	□ □ ③	Sprint 2
	□ □	□ □	□ □ ③		Sprint 3
	□ □	□ □	□ □	□ □	Sprint 4

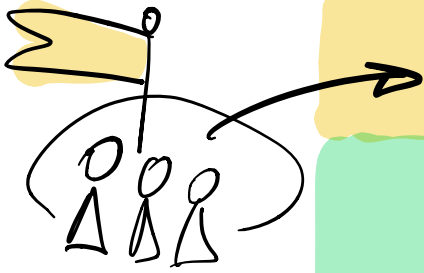
Find MVP, Plan Delivery per Sprint and Squad



# ⑤ MANAGE THE DELIVERY

EPIC Squad A

LEAD SQUAD  
COORDINATES THE DELIVERY



- PO**
- PO synchs
  - Release Go/No Go
  - OUTCOME Realized
  - Privacy Impact Assessment
  - Risk Analysis

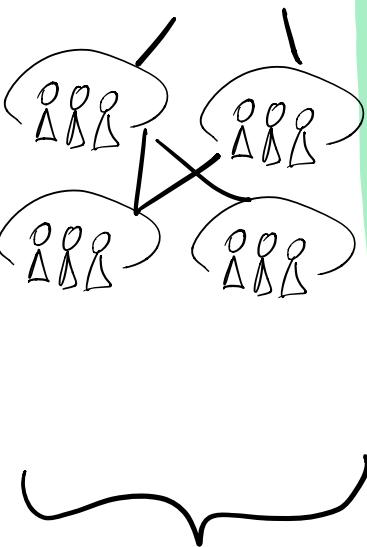
- ATL**
- COORDINATE ALL SQUADS:
- Scrum of Scrums
  - Sprint Plannings Demos & Reviews Retrospectives
  - Visualize status
  - Integration
  - E2E Tests coordination
  - Manage the Release to Prod.

- SA**
- Selection Analysis & Design

- Squad Members**
- Design Review
  - Code Review
  - Compliance to standards
  - E2E Tests

create { E2E Test Strategy, E2E Test Cases, E2E Test Data }  
Execute Test Cases

A	B	C	D	
□	□	□	□	Sprint 1
□	□	□	□	Sprint 2
□	□	□	□	Sprint 3
□	□	□	□	Sprint 4



- CONTRIBUTING SQUADS**
- Responsible for delivery of own part
    - .DoD
    - .Quality
    - .Test
    - .Compliance to standards
  - Participates in meetings / activities planned by Lead Squad

★ WITH SUPPORT (COACHING, MENTORING) FROM THE QA-TEAM

